

**Development and Energy in Africa (DEA) project
A case for Botswana**

THIRD National Workshop

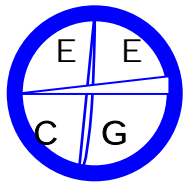
PHAKALANE GOLF ESTAGE, Gaborone. Botswana

held

1 3th July, 2007

TRAINING WORKSHOP PROCEEDINGS

Workshop organized and proceedings prepared by:



EECG

Energy Environment, Computer & Geophysical Applications

EECG Consultants Pty Ltd

P.O. Box 402339.

Gaborone. BOTSWANA

Tel/fax +267-3910127, mobile +267-71693104

National Contact Person: Dr Peter P. Zhou (Director)

1. INTRODUCTION

1.1 Background

The 3rd national workshop is the final of the national workshops under the DEA project and took the form of a training workshop for a selected group of energy practitioners and planners. This is in line with Work Package 8 (Dissemination). Box 1 presents what the DEA project is all about.

DEA is a project under the European Commission's Intelligent Energy-Europe programme COOPENER. The project commenced in May 2005 and it is expected to last for 30 months, until October, 2007. The principal aims of the DEA project are (i) to identify and examine the developmental impacts of energy interventions linked to improving energy access and poverty alleviation and (ii) to use the information and insights gained to improve on-going and future energy interventions by energy policymakers and institutions in six Sub-Saharan African countries: Botswana, Ghana, Mali, Senegal, Tanzania and Zambia. The immediate objectives of the DEA project are (i) to establish and apply an Assessment Framework for evaluating development and poverty impacts of energy interventions and (ii) to engage in a dialogue with energy policy makers and other stakeholders on the basis of the framework, with a view to incorporate these issues in energy policy.

1.2 Workshop Objectives

The objectives of the 3rd national workshop for Botswana were to:

- Expose the workshop participants to Impact assessment framework
- Involve participants in the development of impact assessment framework
- Provide relevant literature for further reference by the participants.

1.3 Attendance

Annex 2 shows the list of participants that attended the training workshop and all of the participants were from the Ministry of Minerals, Energy and water Resources. Four were from the Department of Energy and two from the Planning Unit in the Ministry. The Department of Energy, which is the key stakeholder for and beneficiary of the DEA project in Botswana recommended the participants. Mr Rayment Kweerepe joined the workshop later in the day. He has been consistently attending and Charining all DEA National workshops and has entrenched interest in the Assessment Framework.

2.0 WORKSHOP PROGRAMME AND PRESENTATIONS

The workshop programme had very little component of presentations to introduce participants to the process that led to the development of the DEA Assessment Framework and the various products that were produced as part of the study including national reports, workshop reports, Case studies reports, the Synthesis report and the AF guideline. Participants received some of these reports (and other useful and relevant

literature) on a CD. They were also advised to access the DEA website www.deafrica.net for further information on the project and the various outputs.

The second presentation, was technical and involved the following aspects of the Impact Assessment

- Conceptual Framework, design, stakeholders and their interests
- Baseline issues
- Features of an Assessment Framework and its elements
- Complexities and examples of interventions to demonstrate such complexities
- Examples of causal chains from the DEA study to also demonstrate complexities
- Data collection Plan and Caution
- Application of the Assessment Framework- in particular to developing a M&E framework to projects as demonstrated by two SADC projects.- Impact assessment of the SADC Rural Energy Planning and Environmental Management Training programme; The Repositioning of the Regional Tourism Organization- defining is Operational Programme, Institutional framework, Funding mechanisms and M&E system.

3.0 WORKING GROUPS

Due to the small number of participants, only two working groups were feasible. One group of energy specialists worked on a biomass project idea and the other of planning officers worked on a water project (since they work on energy and other sectors as well).

Initially, the groups were asked to debate on their project idea, document its features and present the ideas. This part was easy and appeared straightforward for the groups.

The next stage was to develop a simple causal chain from the ideas in terms of Inputs to the project, outputs, outcomes and expected impacts. This stage generated considerable discussion to try and understand how to link the causal chain stages, especially if more than one outcome or impact was expected. The definition of outcome and how that differed from outputs and impacts was interesting and hopefully shed some light on what constitutes these stages of the causal chain. Surprisingly, the groups were able to develop causal chains that were more sophisticated than what was expected.

The development of data collection plan- defining the elements to measure, indicators, sources of data, methods of collection was done collectively due to shortage of time. This was done using one of the causal chains that was well understood by both groups.

3.2 General Comment

The participants showed interest to learn about the Impact Assessment and how they can apply it to M&E in their workplaces. The time of training however was too short to

impart adequate knowledge for participants to apply themselves without additional training and practice.

Those from the Planning Unit have expressed interest to attend the Arusha workshop, to benefit from additional exposure and they would fund their way to the workshop.

4.0 FOLLOW-UP ACTIVITIES AND FUTURE OF THE PROJECT.

Item	Responsibility	Time frame
Invite Ministry Participants to ARUSHA meeting	EECG	August, 2007
Approach EECG for any assistance	Participants	Up to end of DEA project

5.0 WORKSHOP EVALUATIONS

A workshop evaluation was done by participants based on the elements presented in table 5.1

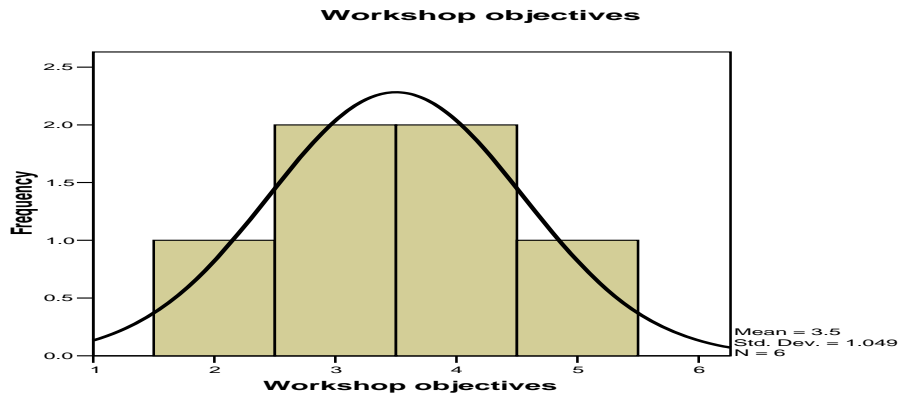
Table 5.1 Elements Evaluated by workshop participants

ITEM		Ranking				
	ITEM	Poor 1	Fair 2	Good 3	Very good 4	Excellent 5
1	Workshop Objectives					
2	Training Outline					
3	Clarity of Presentations					
4	Clarity of Explanations					
5	Effectiveness of exercises					
6	Impact Analysis					
7	Training usefulness					
8	Future Training Needs					

The results have been presented by our statistician in an elaborate way below. The evaluation results show that the training workshop was well received judging by the ranking which is good and above for most of the items evaluated.

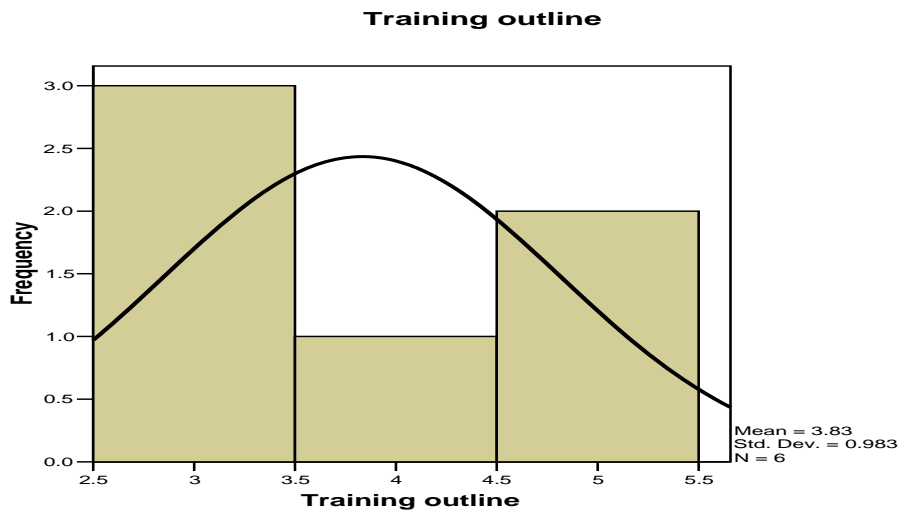
Workshop objectives

Ranking	Frequency	Percent
fair	1	16.7
good	2	33.3
Very good	2	33.3
Excellent	1	16.7
Total	6	100.0



Training outline

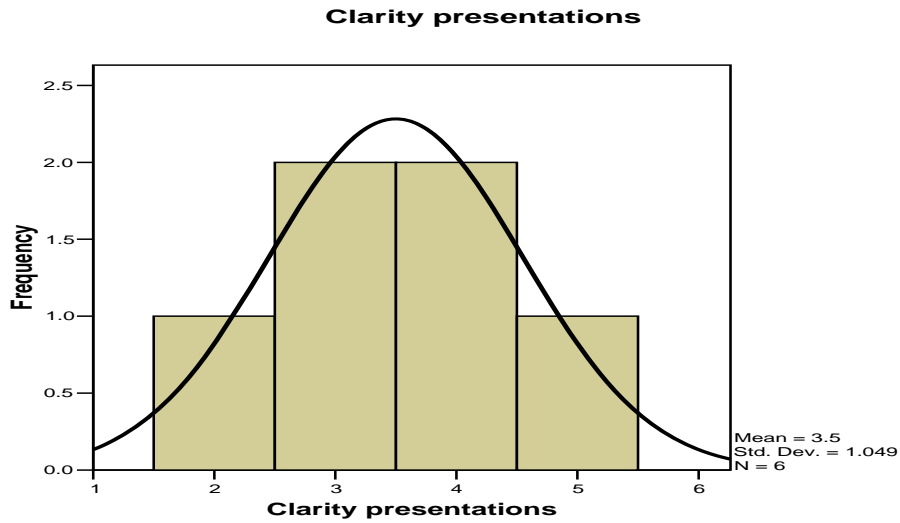
Ranking	Frequency	Percent
Good	3	50.0
Very good	1	16.7
Excellent	2	33.3
Total	6	100.0



Clarity presentations

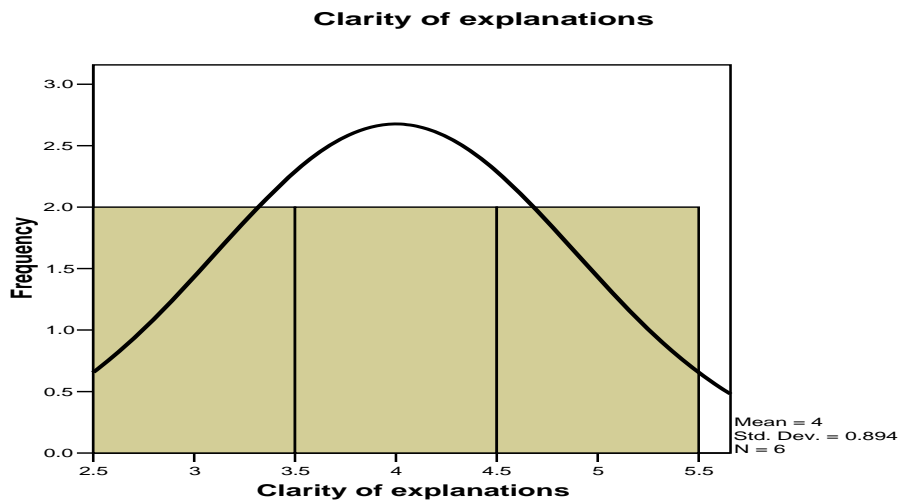
Ranking	Frequency	Percent
Fair	1	16.7
Good	2	33.3
Very good	2	33.3

Excellent	1	16.7
Total	6	100.0



Clarity of explanations

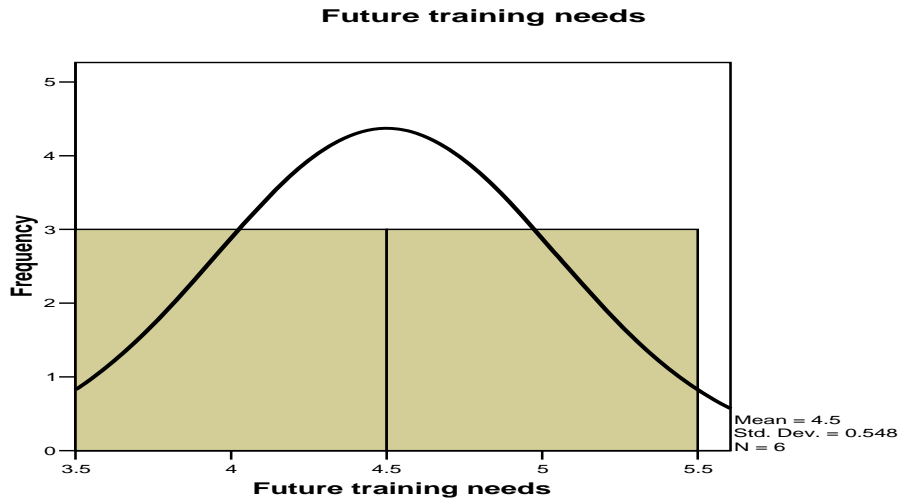
Ranking	Frequency	Percent
Good	2	33.3
Very good	2	33.3
Excellent	2	33.3
Total	6	100.0



Future training needs

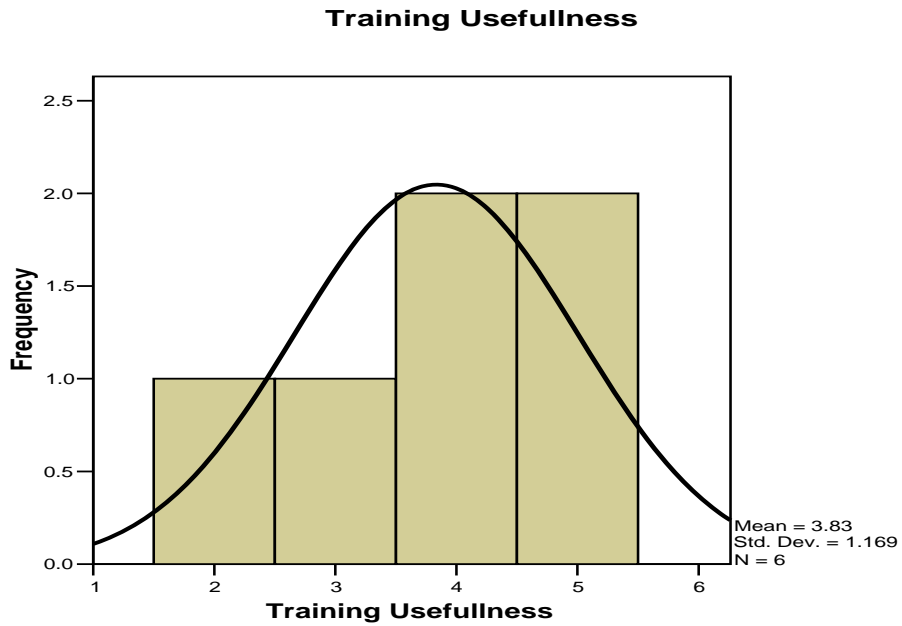
Ranking	Frequency	Percent
Very good	3	50.0

Excellent	3	50.0
Total	6	100.0



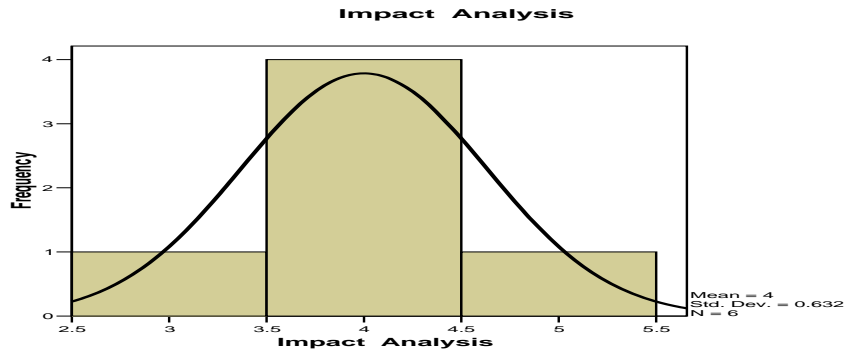
Training Usefulness

Ranking	Frequency	Percent
Fair	1	16.7
Good	1	16.7
Very good	2	33.3
Excellent	2	33.3
Total	6	100.0



Impact Analysis

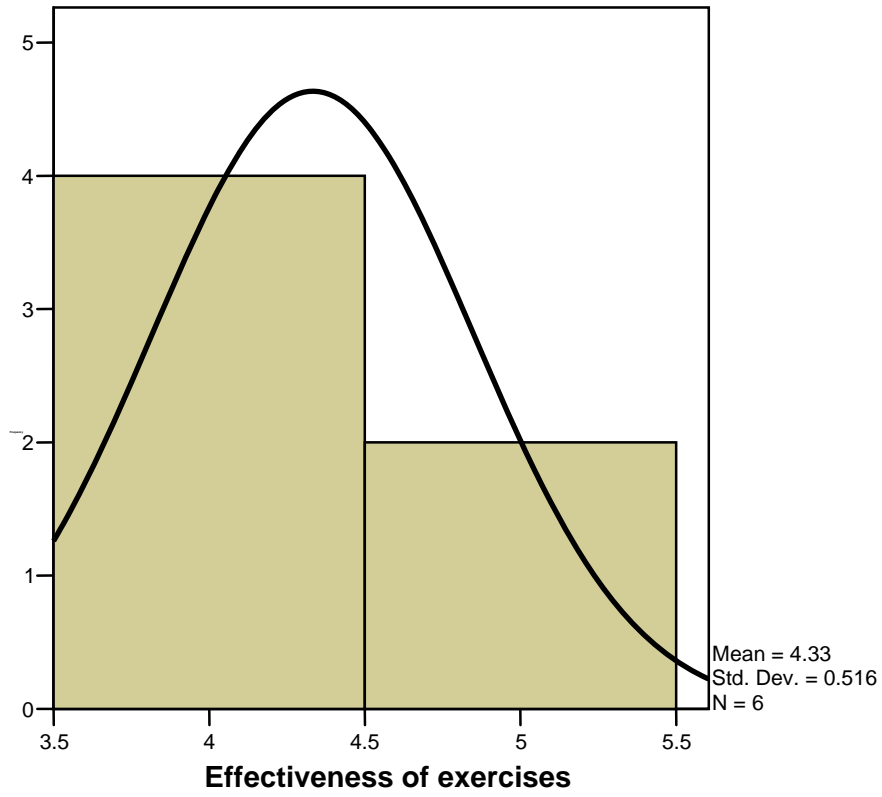
Ranking	Frequency	Percent
Good	1	16.7
Very good	4	66.7
Excellent	1	16.7
Total	6	100.0



Effectiveness of exercises

Ranking	Frequency	Percent
Very good	4	66.7
Excellent	2	33.3
Total	6	100.0

Effectiveness of exercises



Annexes

Annex 1: Workshop Agenda

0830 – 0900	Participant introductions & Expectations
0900 – 0945	Project Objectives and process to date – Recap (P Zhou)
0945 – 1015	Presentation on approach to Impact assessment (P Zhou)
1015 – 1045	*****TEA/COFFEE BREAK*****
1045 – 1115	Brief Documentation of the project Ideas (participants)
1115 – 1145	Presentation of project Ideas (participants)
1145 – 1230	Design Impact Maps (Simple ones) (participants)
1230 – 1330	*****LUNCH*****
1330 – 14 00	Presentations and Discussion on Impact Maps (ALL)
1400 – 1430	Elaboration on Impact Maps – Casual Chains (ALL)
1430 - 1500	Create Table of What to measure, Indicators, source of data, Methods etc (participants)
1515 – 1530	*****TEA/COFFEE BREAK*****
1530 – 1600	Draft Research Plan (participants)
1600 – 1630	Presentations (participants)
1630 – 1700	Training Evaluations, Future needs, closing (ALL)

Annex 2: List of Participants at 3rd National Training Workshop

Serial Nr.	Last Name	First name	Organization	Postal Address	Telephone	Email
1.	Zhou	Peter	EECG	P.O BOX 402339,Gaborone	3910127	pzhou@global.bw
2.	Wright	Mareledi	DEA	P/Bag 00378 Gaborone	3914221	mwright@gov.bw
3.	Kentse	Thabo	DEA	P/Bag 00378 Gaborone	3914221	tkentse@gov.bw
4.	Tlhobogang	Oratile	MMEWR	P/Bag 0018, Gaborone	3656625	otlhobogang@gov.bw
5.	Seeletso	Vincent	DEA	P/Bag 00378 Gaborone	3914221	vseeletso@gov.bw
6.	Sebase	Irene	MMEWR	P/Bag 0018, Gaborone	3656626	isebase@gov.bw
7	Kwerepe	Raymond	Department of Forestry and Range Resources MEWT		Tel: +267 3954050/31 80334 Fax: +267 3954051	rkwerepe@gov.bw